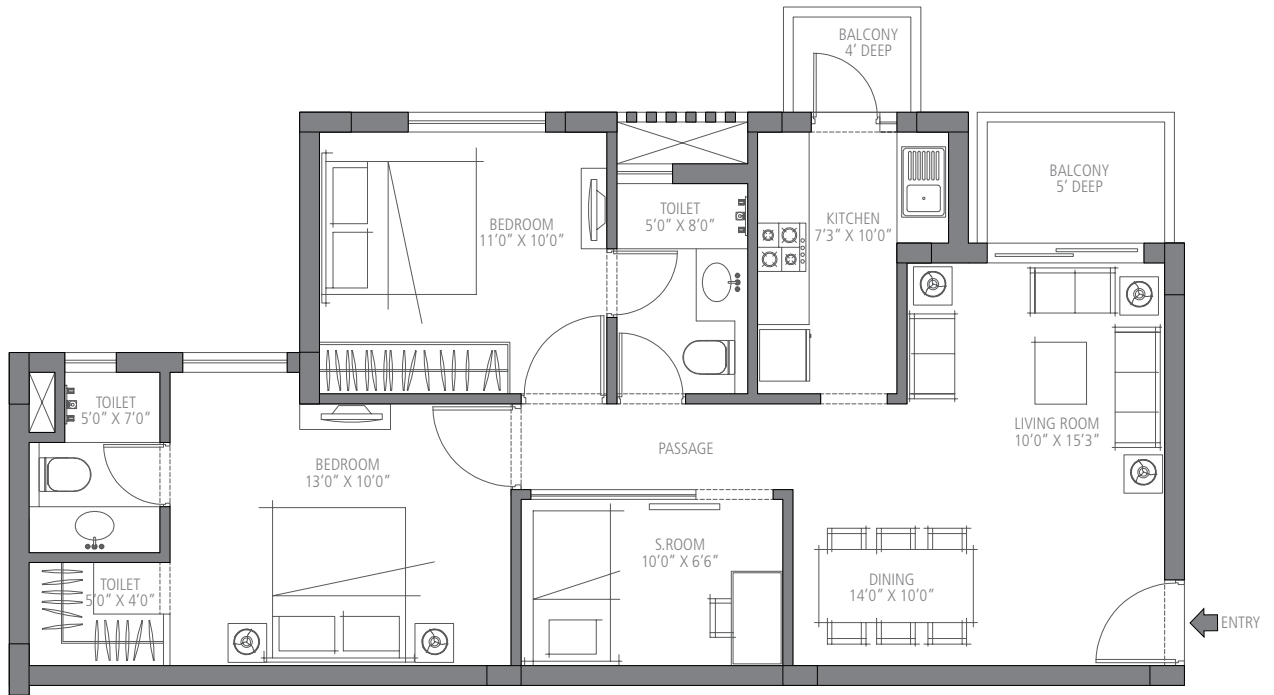




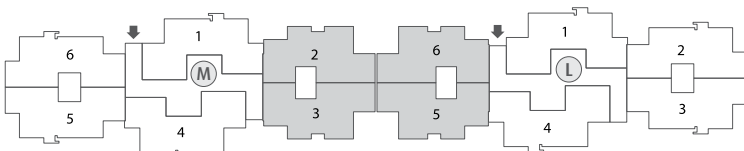
EMERALD ESTATE
AT EMERALD HILLS

Unit 4 - 1020 sq. ft.

2 Bedroom, 2 Bathroom and S. Room
Towers - L & M

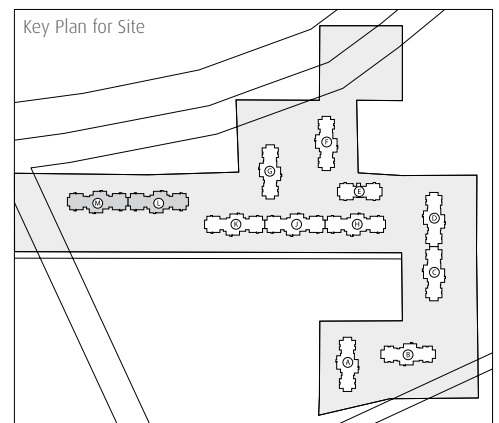


Key Plan - Towers L & M



1 sq. mtr. = 1.196 sq. yds. & 1 sq. mtr. = 10.76 sq. ft.

In the interest of maintaining high standards, all floor plans, layout plans, areas, dimensions and specifications are indicative and are subject to change as decided by the company or by any competent authority. Soft furnishing, cupboards, furniture and gadgets are not part of the offering.

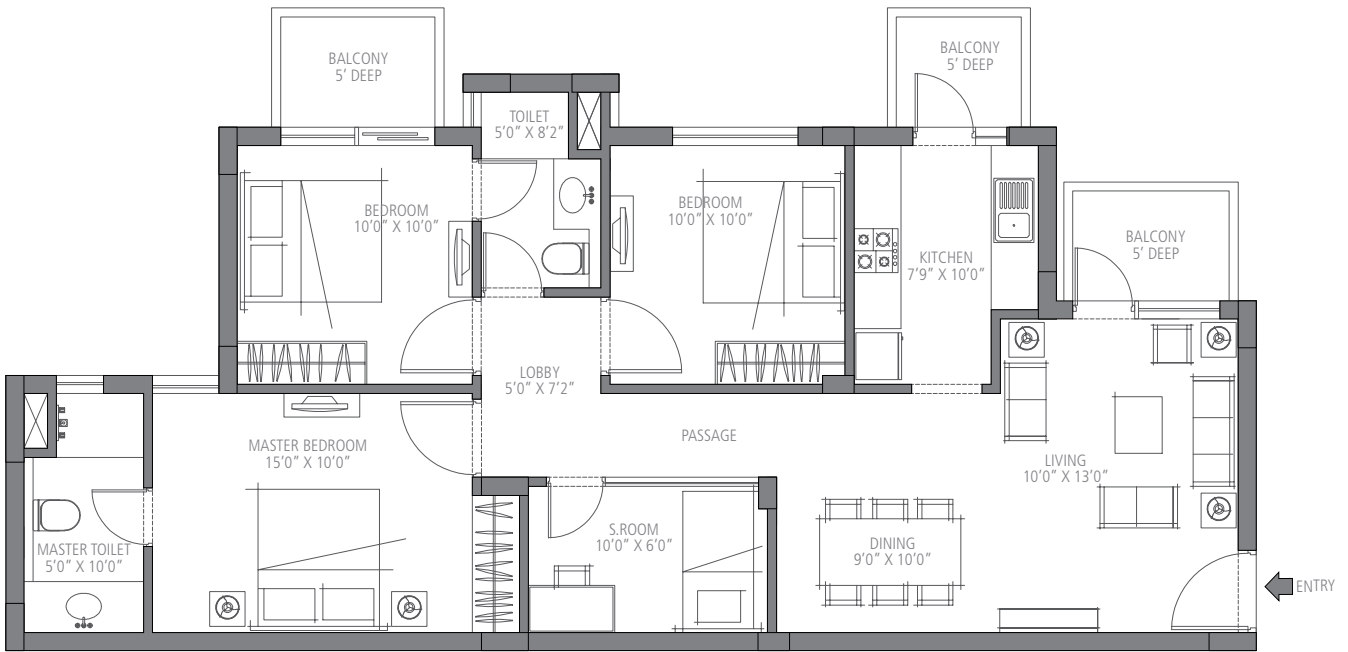




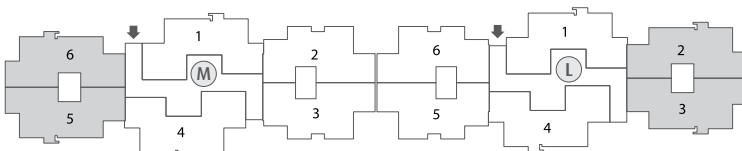
EMERALD ESTATE
AT EMERALD HILLS

Unit 5 - 1310 sq. ft.

3 Bedroom, 3 Bathroom and S. Room
Towers - L & M

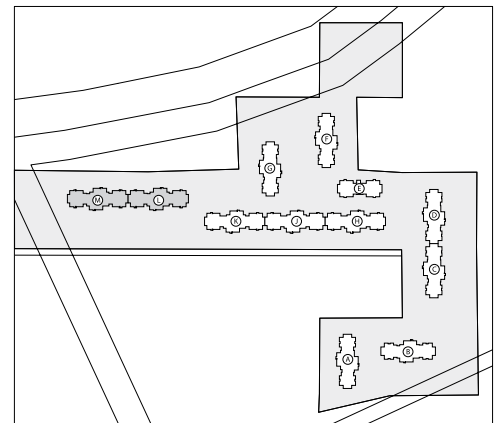


Key Plan - Towers L & M



1 sq. mtr. = 1.196 sq. yds. & 1 sq. mtr. = 10.76 sq. ft.

In the interest of maintaining high standards, all floor plans, layout plans, areas, dimensions and specifications are indicative and are subject to change as decided by the company or by any competent authority. Soft furnishing, cupboards, furniture and gadgets are not part of the offering.

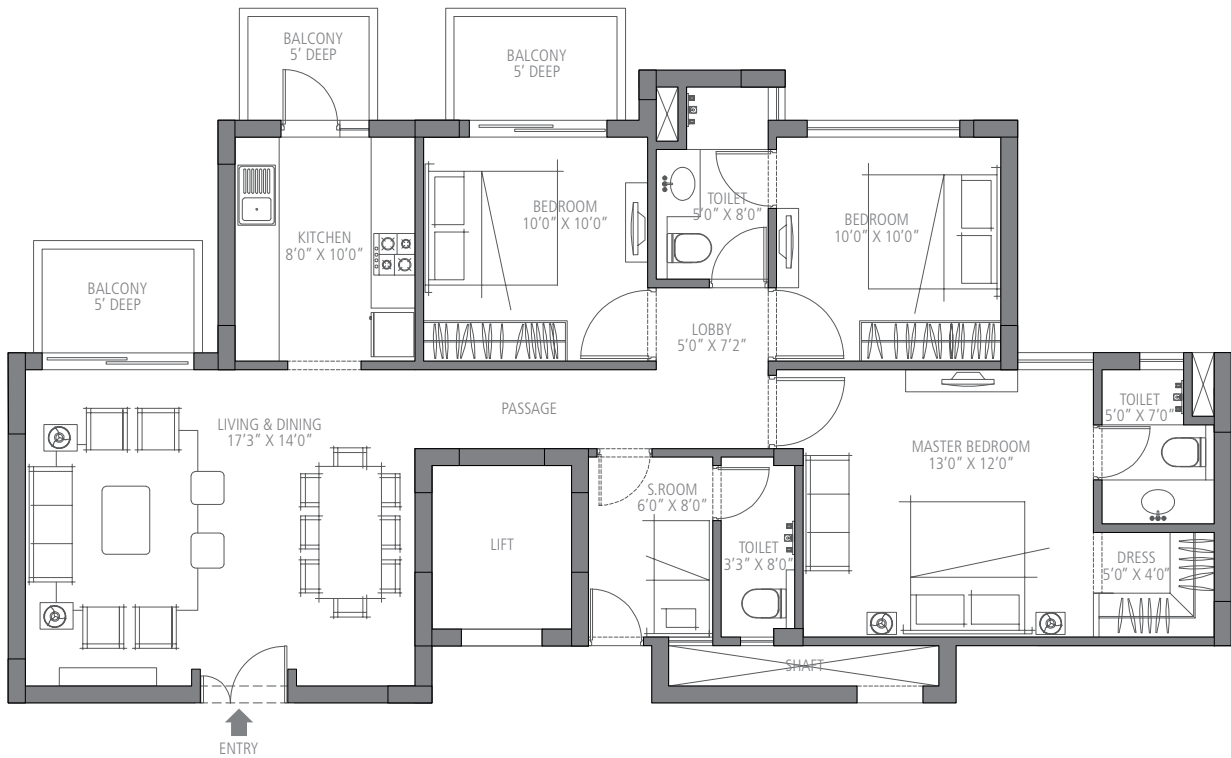




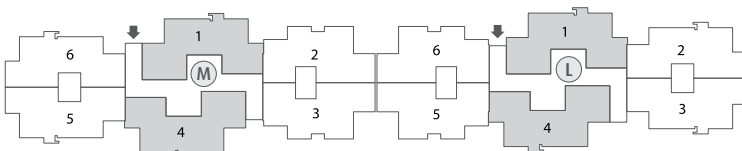
EMERALD ESTATE
AT EMERALD HILLS

Unit 6 - 1395 sq. ft.

3 Bedroom, 3 Bathroom and S. Room
Towers - L & M



Key Plan - Towers L & M



1 sq. mtr. = 1.196 sq. yds. & 1 sq. mtr. = 10.76 sq. ft.

In the interest of maintaining high standards, all floor plans, layout plans, areas, dimensions and specifications are indicative and are subject to change as decided by the company or by any competent authority. Soft furnishing, cupboards, furniture and gadgets are not part of the offering.

